



FAST View v1.4

Installation and Operation Instructions

Note: As of this writing, Fastview is NOT compatible or supported with Windows 7
October 2009

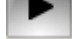
Installation Instructions

1. Download the latest version of Fastview from the download page at **<http://www.fuelairspark.com/>**
2. From where you saved the download in step 1, double click "Fastview 1.4 Install.exe" This will launch the Fastview installation program.



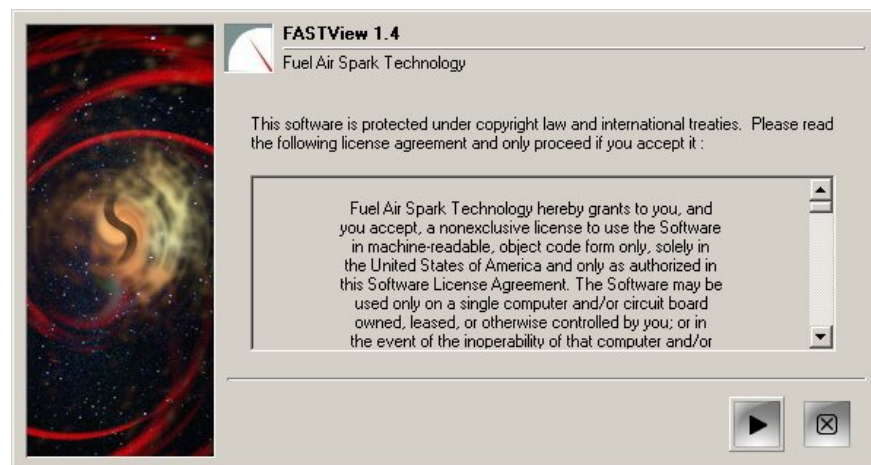
3. You might receive a "Security Warning" screen. This is normal behavior, select "Run" to begin the installation.



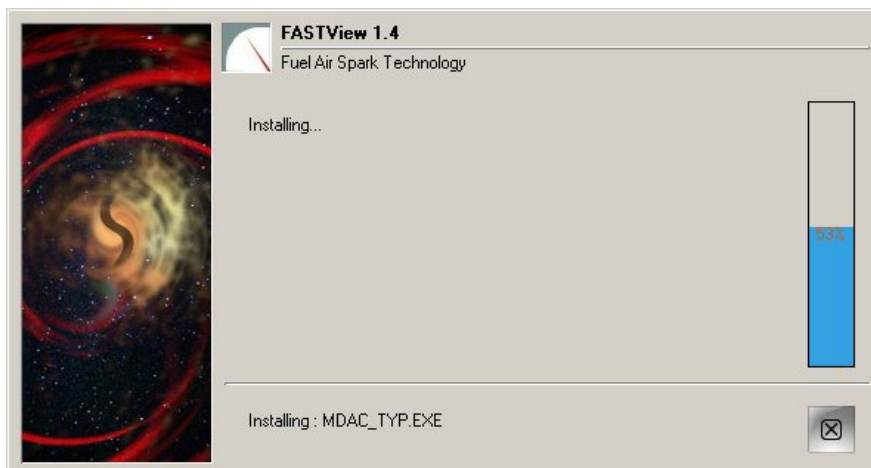
4. The Fastview installation will begin. Select the square Arrow  button to continue.




5. Select the black Arrow key  again to accept the **Software License Agreement**.



5. The installation process with begin.



6. Select the Check  button at the end of the installation to complete the install.

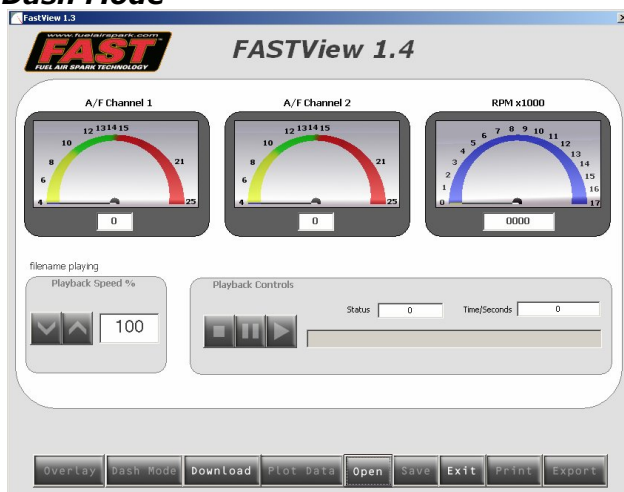


Software Operation Instructions

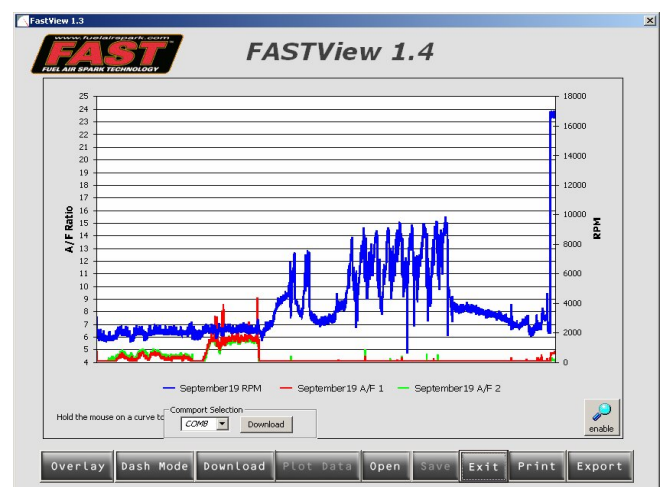
Fastview features 2 modes of viewing your Air Fuel data. DASH Mode and PLOT Data mode. “Dash” mode allows you to playback your log file in real time while PLOT Data model displays the contents of the log file in graph format.

When you start the application, you will initially be at the DASH mode. You can either **OPEN** a previously saved file or **DOWNLOAD a LOG** from your Wideband Air/Fuel Meter.

Dash Mode



PLOT Data Mode

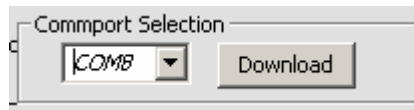


Downloading a LOG from your Wideband Air/Fuel Meter:

1. Using the communications cable supplied with your FAST RPM Module, connect your PC serial or USB (with the supplied USB to Serial adaptor) to the top connector of the Air/Fuel meter.
2. Using the DC power supply supplied with your FAST RPM Module, connect it to the bottom connector of the Air/Fuel meter. The module with power up. Without

pressing any buttons on the Air/Fuel meter will stop at the first selection screen. This is the screen that you **must** be in to download a LOG from the meter.

3. With the FASTView software open, press the DOWNLOAD button. A Commport Selection drop down menu will appear.



The port you select will vary depending on your computer. If you do not know what USB / Com port on the computer the Fastview is connected to, try each port sequential until the Fastview software is able to communicate with the Fast module.

Important Note: *If the Fastview software is unable to communicate with Fast Air/Fuel meter, a warning will be shown if an Air/Fuel meter cannot be found. Check your connections from the Fast module to the computer. Most newer computers will connect via USB to the fast module and will require the included adapter cable.*

4. When done downloading, a Save window will open asking you if you want to save this file to your PC. If you select YES, it will open the save menu and you can select where on your computer you would like to save your files and give this file a name. The FAST Wideband Air/Fuel LOGS are stored with the extension .RON.

Viewing a LOG file in FASTView: **Mouse Over function:**

To find out what a particular button does, just hold your mouse cursor over the button without pushing the button and a description of the button will appear.

Dash Board View:

1. Once you start the FASTView software, click the OPEN button to load a previously saved file. An OPEN window will open and you can select where the file was saved on your PC. Select the file you would like to view and click OPEN.
2. In the Dash Board View you can play the file with the PLAY, STOP, and PAUSE buttons. The playback speed can be adjusted with the UP and DOWN buttons. Elapsed time readout will be displayed in the Time/Seconds window. The file's title will be shown in the File: text above the Playback Controls.

Plotting Data:

1. By turning off the Dash Mode button and clicking the Plot Data button, you will open the Plot Viewer Mode. You will see the Air/Fuel ratio on the left and the RPM on the right side of the graph. Below the graph is the Legend that shows the file's name and the color that has been applied to each channel.

2. A handy feature is the MOUSE OVER feature. If the mouse is positioned over a trace, a small text box will automatically show you the RPM, AF1, and AF2 values for that exact moment in time.
3. If you wish to overlay another previously saved file over the current one being viewed, click on the Overlay button. The Open window will open once again and you can select a file to add to your plot. Only 2 files may be viewed a time.

Printing Plotted Data:

1. With a plot of your data visible on the screen you can print this graph by clicking the Print button. A Print window will open and allow you to select the printer you would like to print to. The computer's default printer is always pre-selected for you.

Exporting Data to Excel:

1. For the advanced user that would like to do advanced calculations, graphs, or comparisons, an Export button has been provided that will export a file directly into Microsoft Excel Format. This file can be opened directly with the Microsoft Excel program. Only one file at a time can be exported. After opening a file, click the Export button to open the Save As window. Select where you would like the exported file to be saved and a name for it.